

portland:
PAPER CITY

PEOPLE

INSTRUCTIONS

- scissors/cutting knife
- glue • ruler



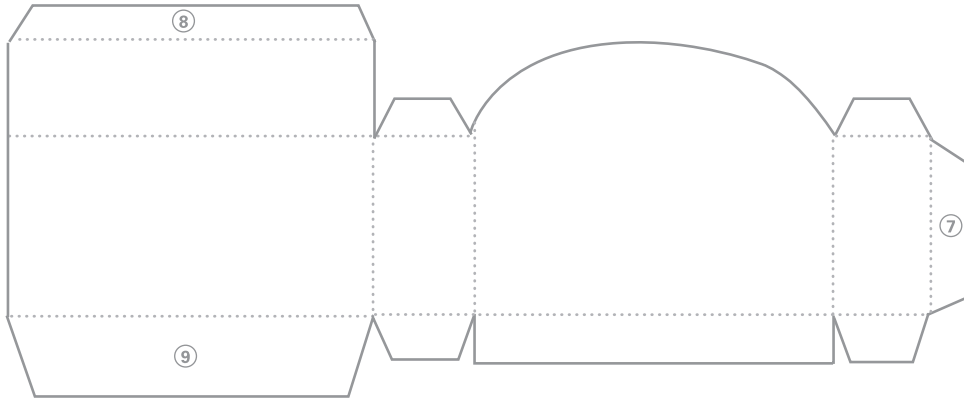
cut

..... mountain fold

----- valley fold

① → ⑩ glue order

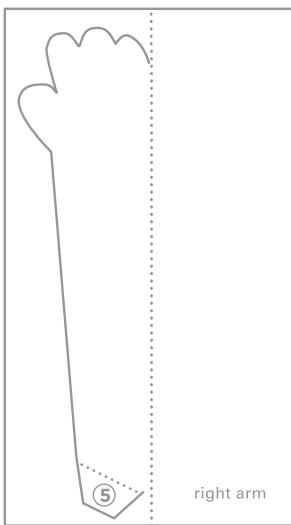
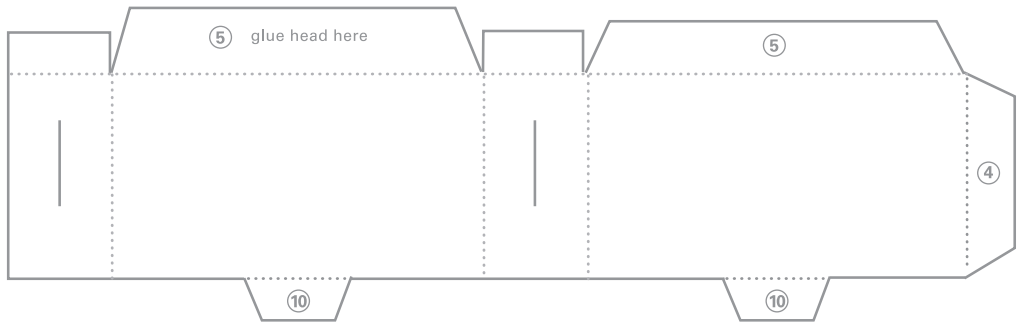
- cut along all solid lines
- score and fold
- glue tabs



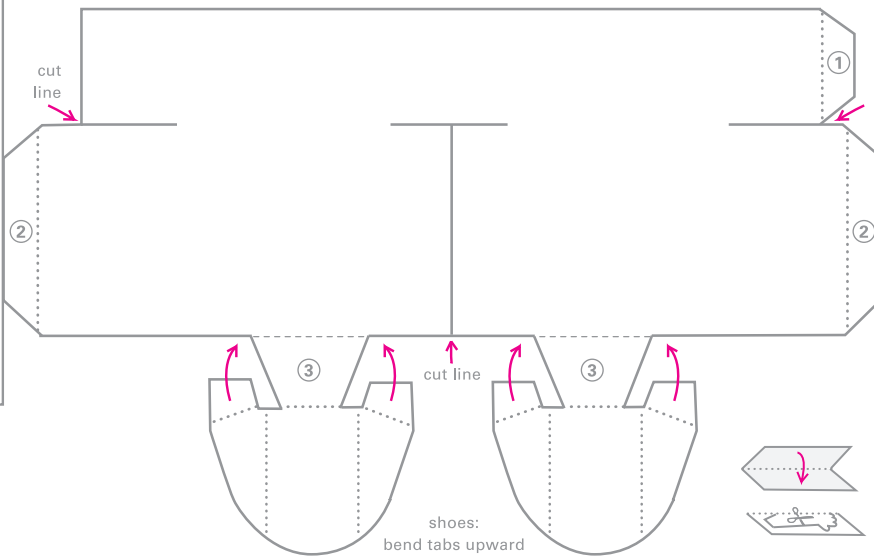
buttons!
 (cut & glue to shirt)



cut arm slits

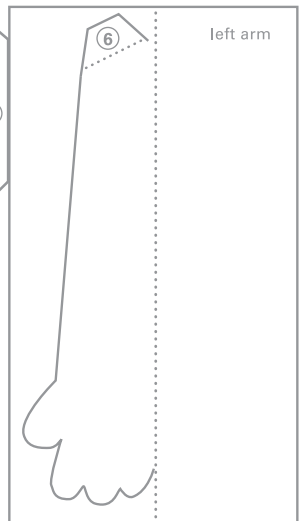


right arm



shoes:
 bend tabs upward
 & glue to legs

for arms:
 fold in half & glue together
 cut along solid lines



left arm