

portland:  
**PAPER CITY**

PEOPLE

**INSTRUCTIONS**

- scissors/cutting knife
- glue • ruler



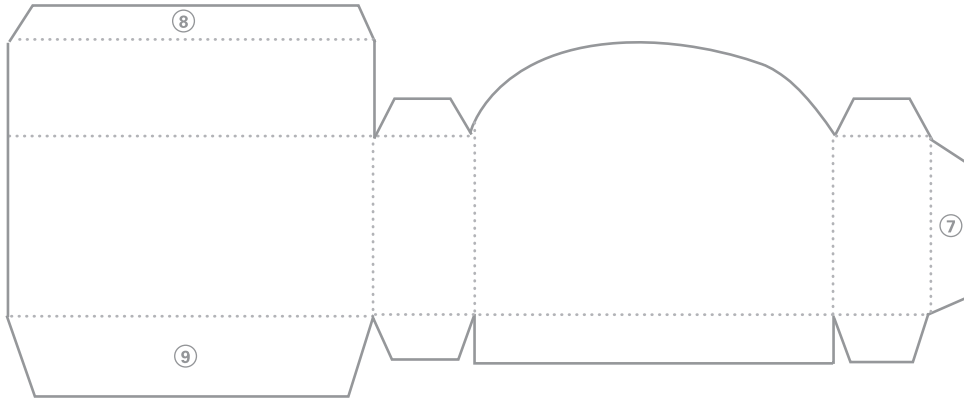
cut

..... mountain fold

----- valley fold

① → ⑩ glue order

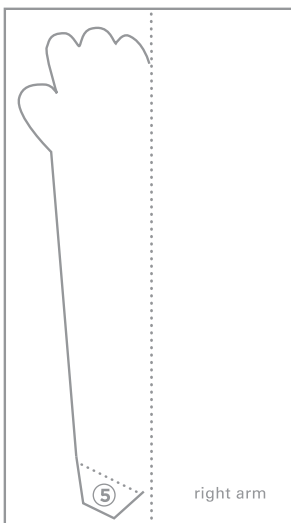
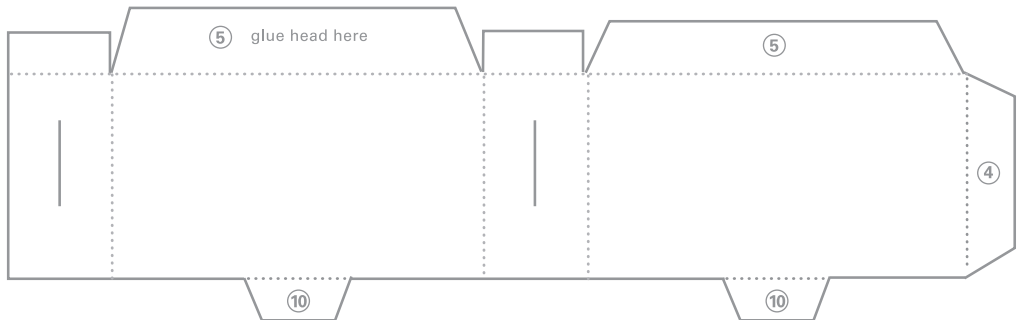
- cut along all solid lines
- score and fold
- glue tabs



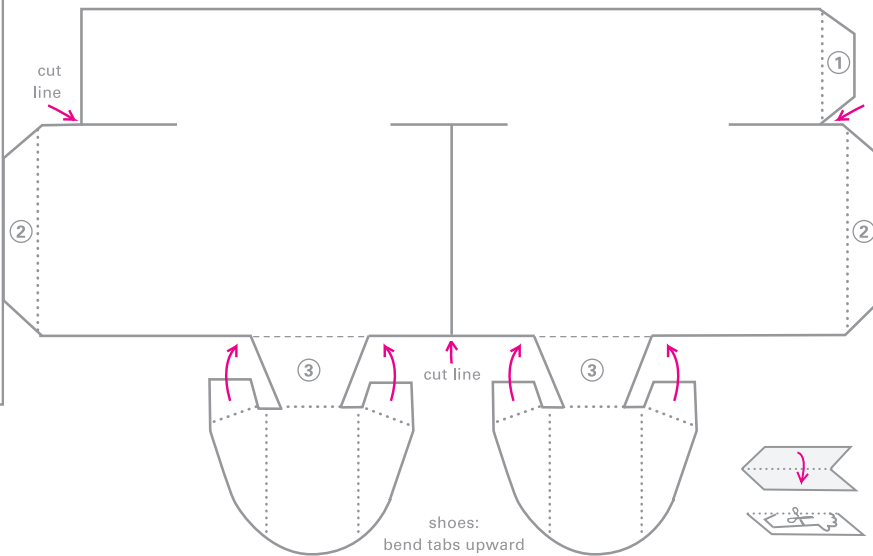
buttons!  
 (cut & glue to shirt)



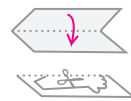
cut arm slits



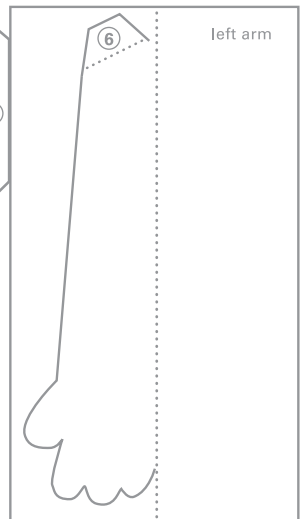
right arm



shoes:  
 bend tabs upward  
 & glue to legs



for arms:  
 fold in half & glue together  
 cut along solid lines



left arm